

R

RECEPTION

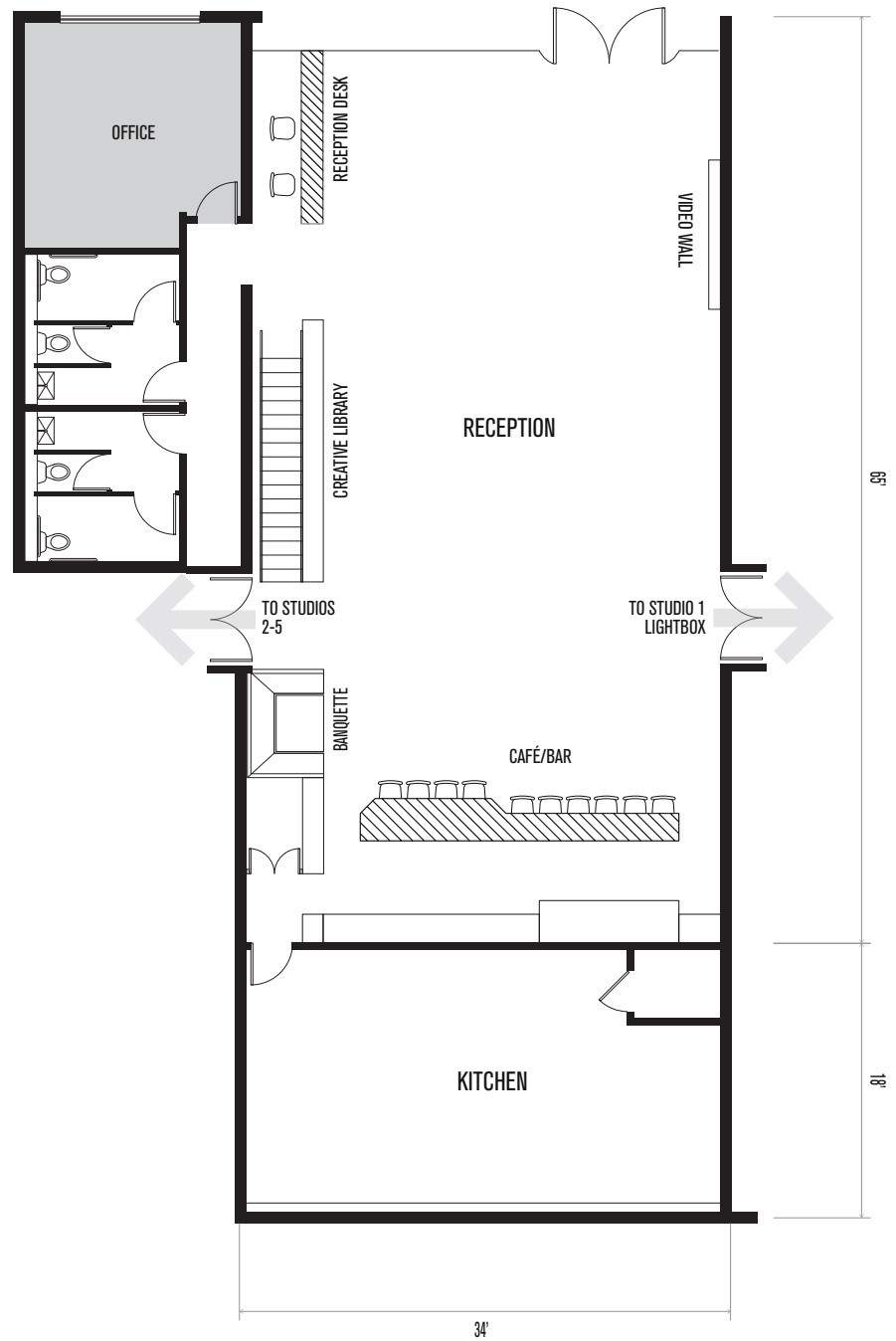
Details:

2,150 sq. ft.
 22' ceilings
 1Gb internet & wireless network
 iPad controlled AV
 9' video wall
 Exquisite cafe/bar

Charging stations
 Creative Library
 Banquette
 World-class commercial kitchen
 Restrooms

Relax, work or socialize in Smashbox Studios' reception area. Home to a world-class bar and cafe, fully stocked Creative Library and a commercial kitchen, this space is ideal for hosting events. During shoots, come kick back at the cafe while you charge up and browse the library.





1

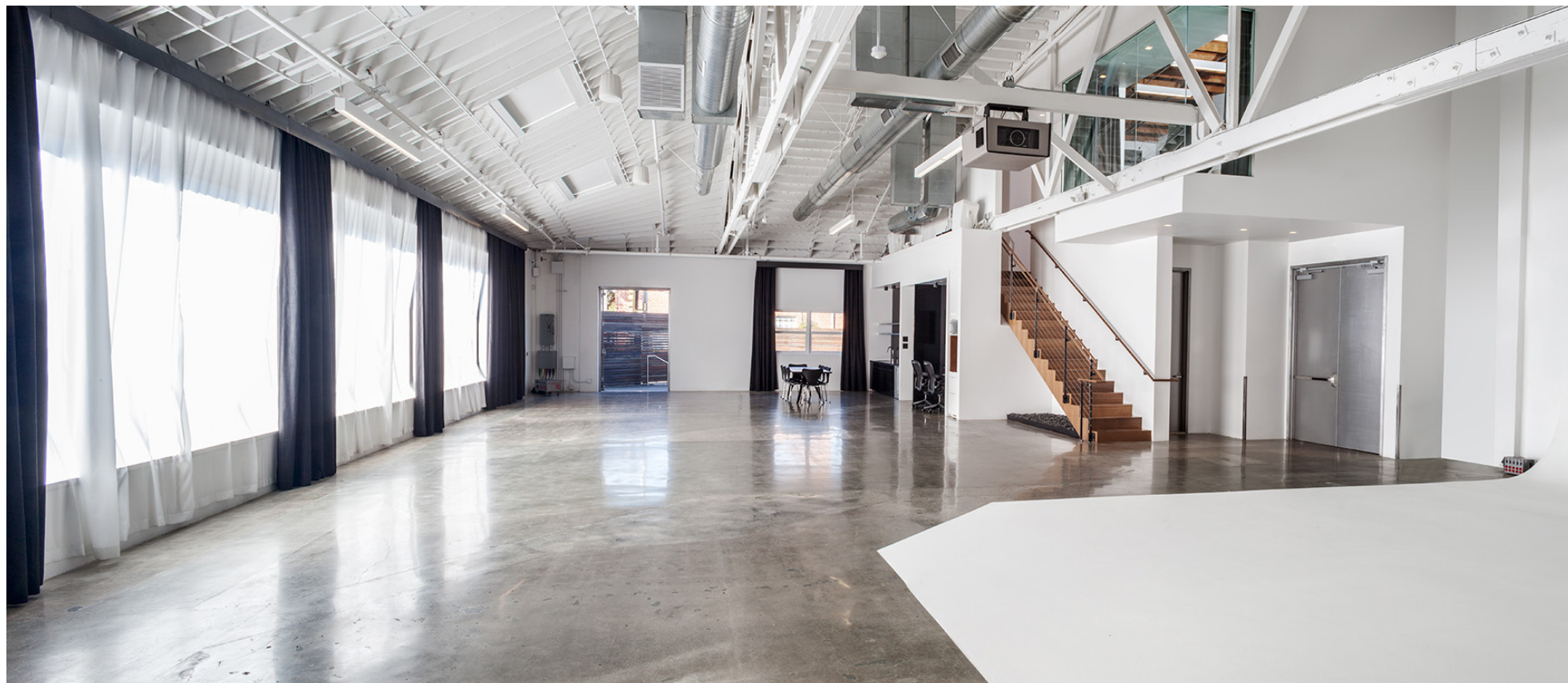
LIGHTBOX

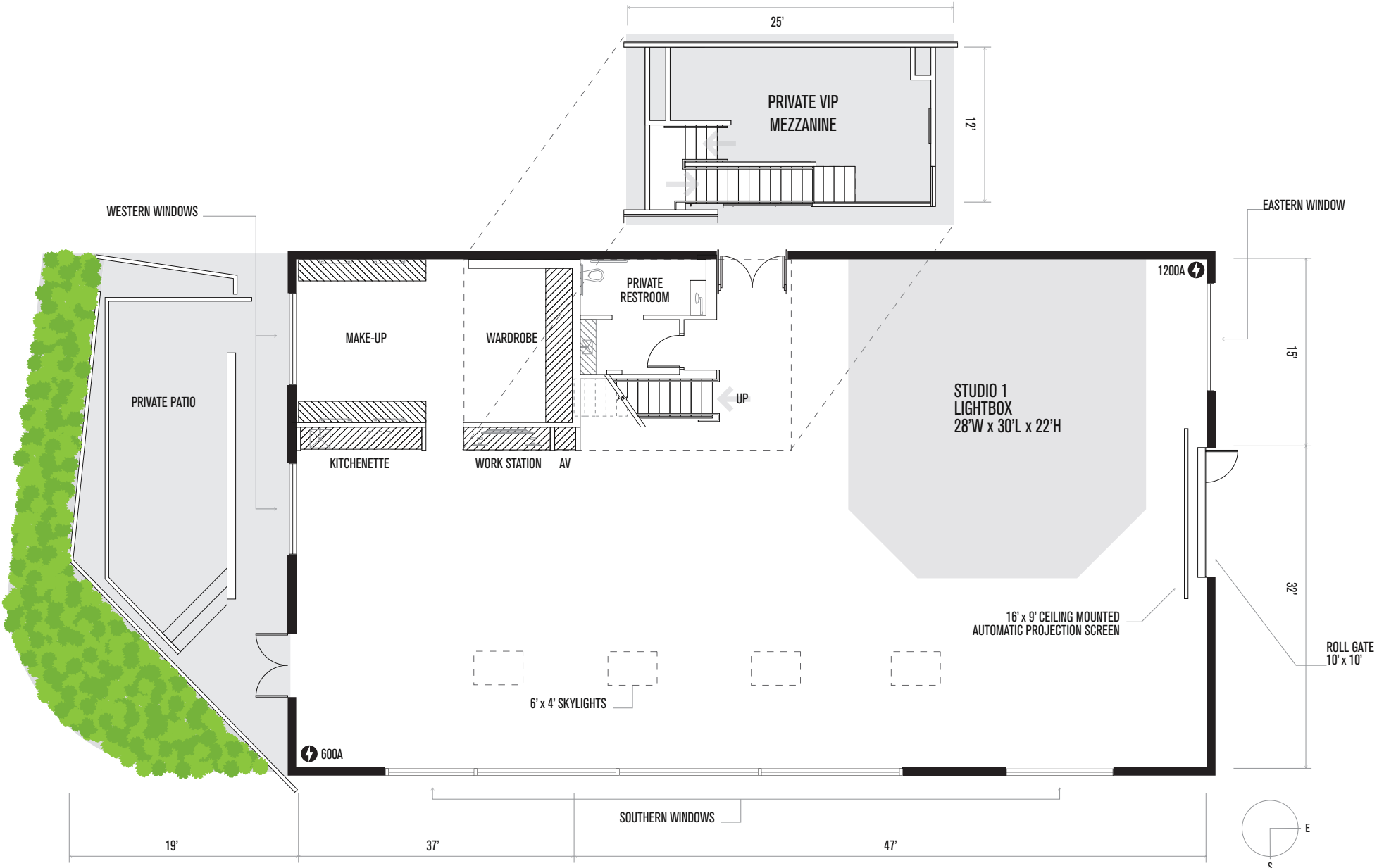
Details:

4,250 total sq. ft.
 3,600 sq. ft. stage
 28'W x 30'L x 22'H cyc
 22' ceilings
 Plus private 750 sq. ft. patio
 Private 300 sq. ft. VIP Mezzanine
 South, west & east exposures
 4 skylights
 1,800 AMP, 3 phase
 iMac, printer & scanner

1Gb internet & wireless network
 Premium cable TV
 iPad controlled AV
 Multi-zone HVAC
 Private restroom & shower
 Kitchenette
 Private hair, makeup & wardrobe
 Valet parking
 10'x10' Roll-gate
 16' x 9' HD projector & screen

Lightbox is one of the most desirable and exclusive studios in LA. Drenched in southern, western and eastern light, it is a truly unique space for both shoots and events. The studio also features a 300 square foot VIP Mezzanine and a stunning 750 square foot private patio.





2

SOFTBOX

Details:

2,775 total sq. ft.

2,090 sq. ft. stage

31'L x 35'W x 22'H cyc

22' ceilings

Plus patio

Overhead lighting grid

Western exposure

1,200 AMP, 3 phase

iMac, printer and scanner

iPad controlled AV

Multi-zone HVAC

1Gb internet & wireless network

Private VIP Lounge

Kitchenette

Private Restroom

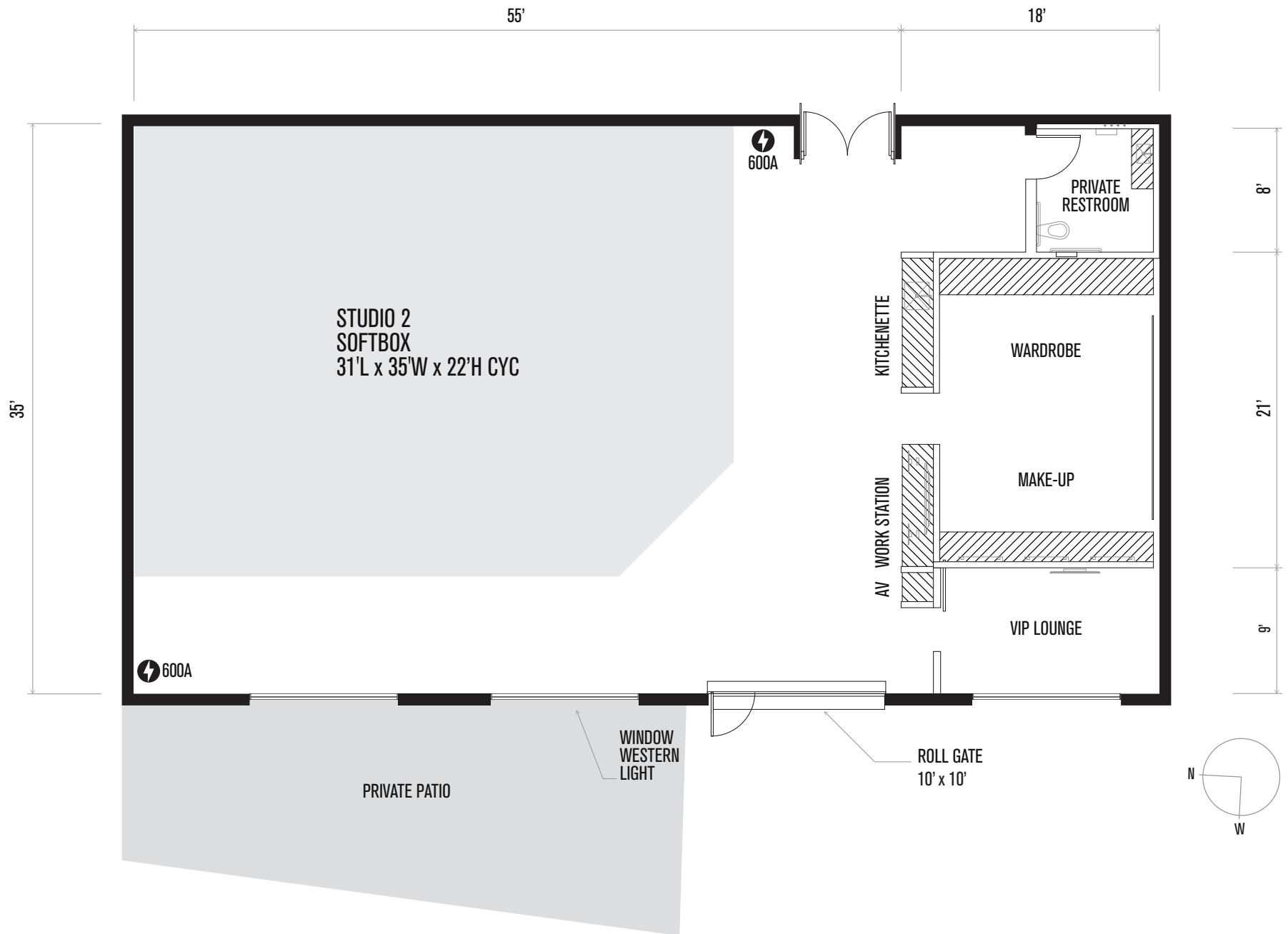
Private hair, makeup & wardrobe

Valet parking

10'x10' roll-gate

Softbox gets its name from the amazing, soft, western light that pours into the studio. Photographers and directors alike appreciate the natural light quality of this special space. The studio and its large, outdoor patio make for an exceptional event space.





3

BLACKBOX

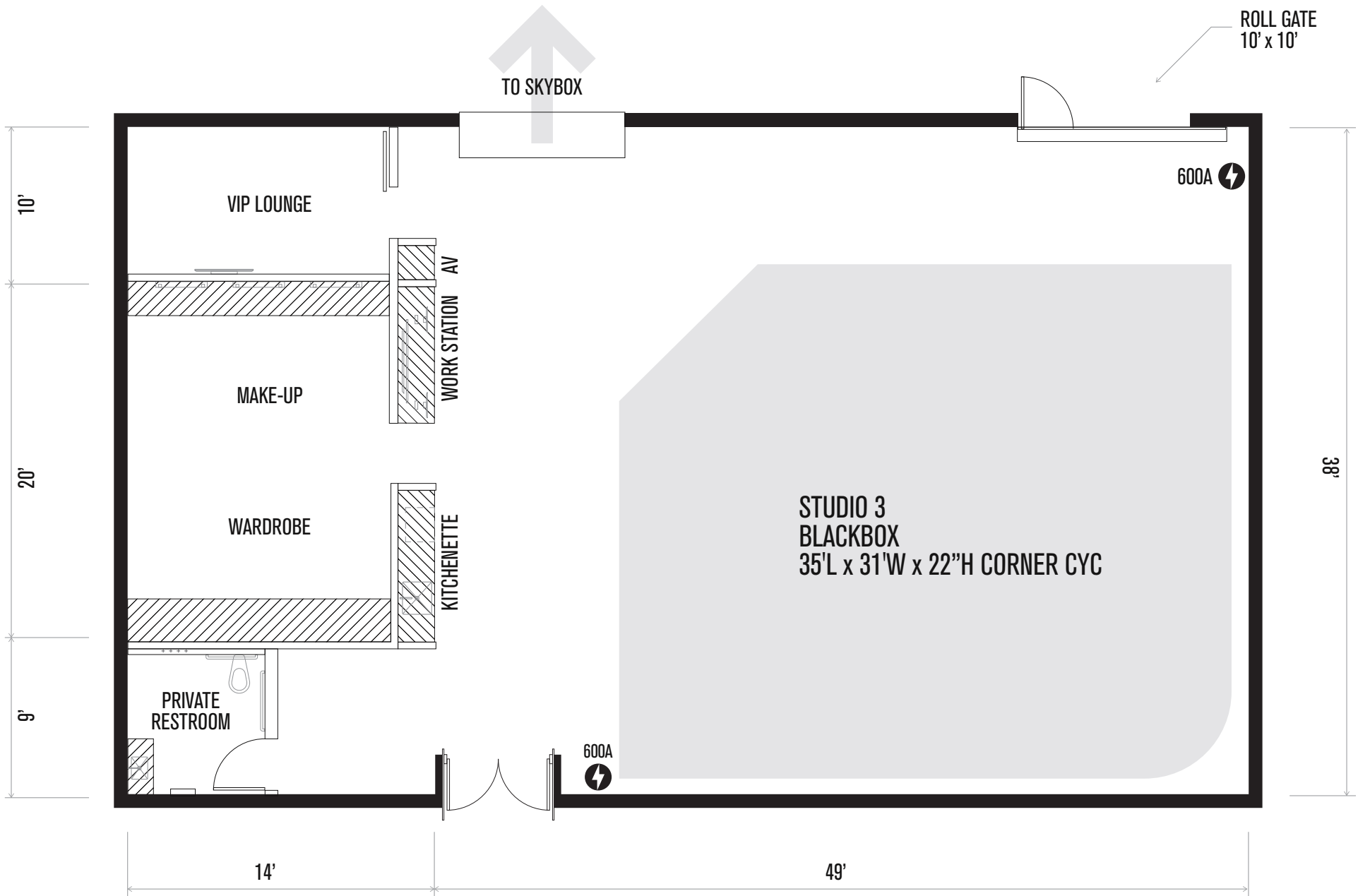
Details:

2,460 total sq. ft.
 1,910 sq. ft. stage
 Can be combined with Skybox for additional 1,400 sq. ft.
 35'L x 31'W x 22"H corner cyc
 22' ceilings
 1200 AMP, 3 phase
 Overhead lighting grid
 iMac, printer & scanner

Premium cable TV
 iPad controlled AV
 Multi-zone HVAC
 Kitchenette
 Private restroom
 Private hair, makeup & wardrobe
 Valet parking
 10'x10' Roll-gate

Blackbox boasts a large corner cyc and 22' ceilings complete with a grid making it an ideal space for film and photo shoots. Easily combined with adjoining Skybox for an additional 1,400 sq. ft. of studio space.





4

BIGBOX

Details:

Qualified soundstage
5,100 total sq. ft.
4,000 sq. ft. stage
62'L x 36'W x 20'H cyc
22' ceiling, 19' beam
Overhead lighting grid
2,400 AMP, 3 phase
iMac, printer & scanner
1Gb internet & wireless network

Premium cable TV
iPad controlled AV
Multi-zone HVAC
Kitchenette
Private restroom & shower
Private hair, makeup & wardrobe
Plus outdoor patio
10'x10' barn door
Valet parking

Bigbox, the ultimate in versatility, features 4,000+ square feet of shooting space, a huge cyc, private VIP Lounge, private restroom and state-of-the-art hair and makeup stations. Bigbox is the perfect stage for gallery shoots, film and video productions and events.



